

Preliminary Floor Plans, Capacities, and Dimensions

Summit



Facility Overview

Located in the heart of downtown Seattle just one block northeast of its existing facility, the Seattle Convention Center's Summit building adds 248,450 square feet of exhibit space, 62 meeting rooms, and a 58,000 square-foot ballroom to the Center's offerings. Each component of the building embraces natural light, and major spaces are connected vertically by two large atriums. The glass-enclosed stair Hillclimb along Pine Street has west-facing views of Pike Place Market and Puget Sound, and the open-air terraces on all levels, designed to accommodate a variety of events, look out to iconic views of the downtown Seattle experience.

OVERVIEW	SQUARE FEET
Total Exhibit Space (Exhibit Hall + Exhibit Lobby + Flex Hall)	248,450
Exhibit Hall + Exhibit Lobby	149,200
Flex Hall	99,250
62 Meeting Rooms	99,620
Ballroom	58,000
Total Lobby Area	140,700
Garden Terrace	14,000
Other Useable Space	13,000
Total Event Space	570,290

Level 1 – Entrance (Street Level - main entrance)

- Retail, restrooms, Market (public zone), public access to parking garage, and access to all event space

Level EX - Exhibit Hall

- Up to 149,200 square feet of exhibit space with 30-foot ceilings
- Four large door portals with removable walls leading into hall from pre-function spaces
- 18 covered bays at one covered loading dock, three freight elevators, four service elevators, and two employee elevators
- Two show offices

Level 2 – Flex Hall

- 99,250 square feet of carpeted, acoustically treated space for exhibits, sessions, or meals; divisible into various options

Level 3 – Meeting Rooms & Garden Terrace

- Up to 29 individual meeting rooms ranging from 800 to 4,620 square feet, totaling 42,320 square feet
- Approximately 35,900 square feet of pre-function space

Level 4 – Meeting Rooms

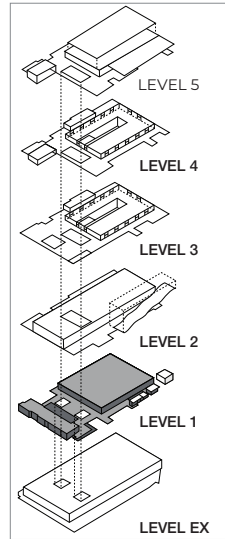
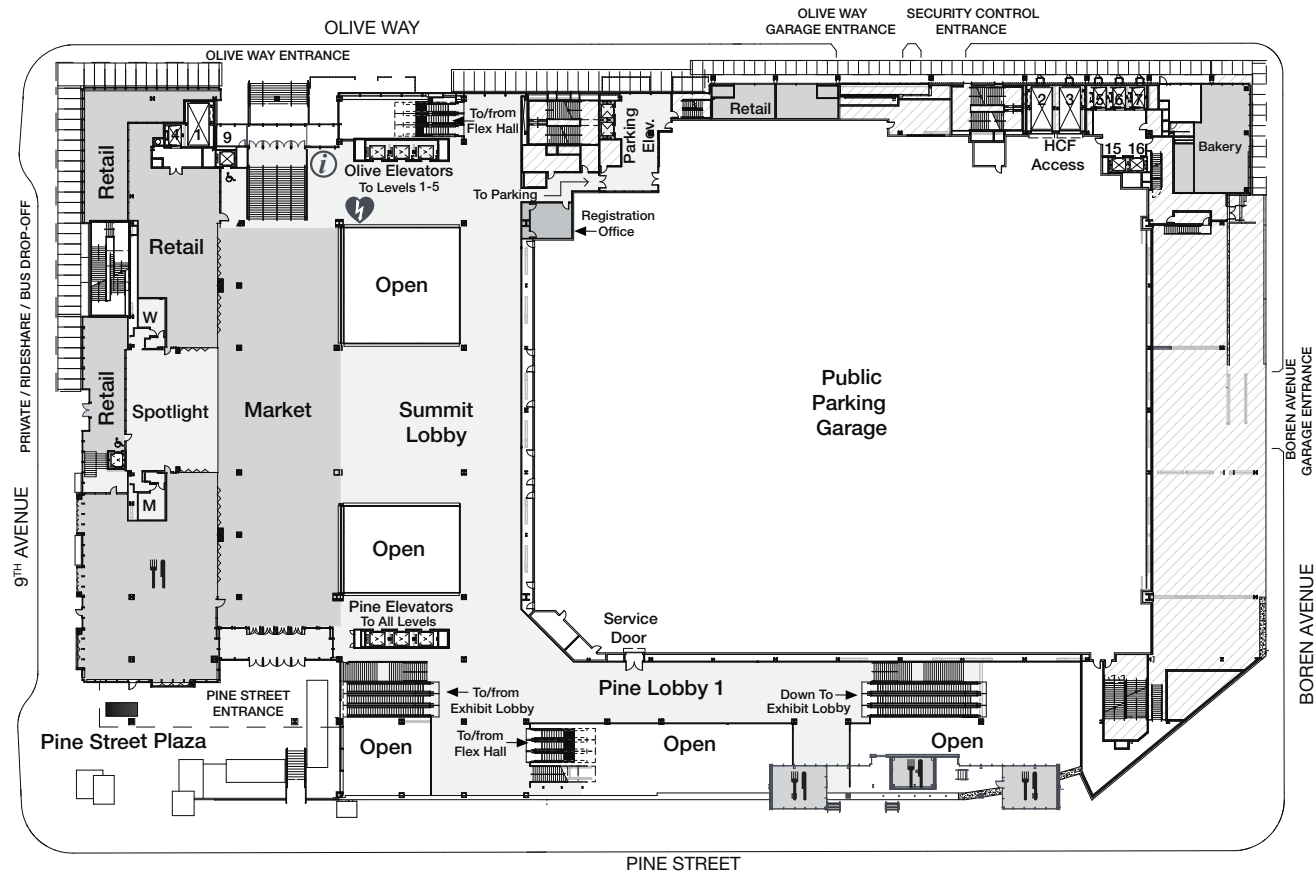
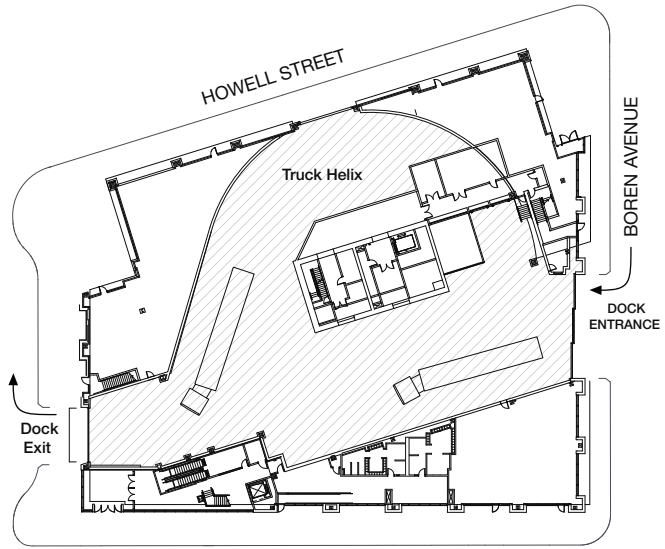
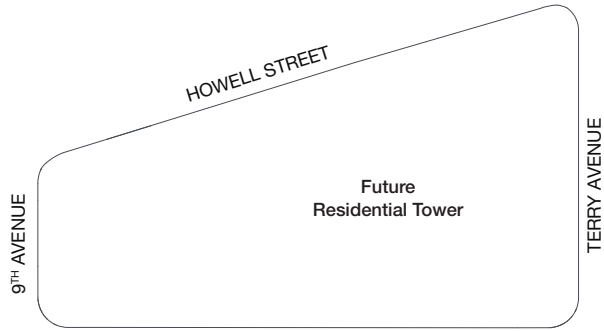
- Up to 32 individual meeting rooms ranging from 540 to 6,500 square feet, totaling 50,800 square feet
- Approximately 38,700 square feet of pre-function space

Level 5 – Ballroom

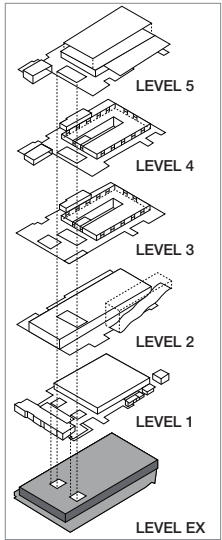
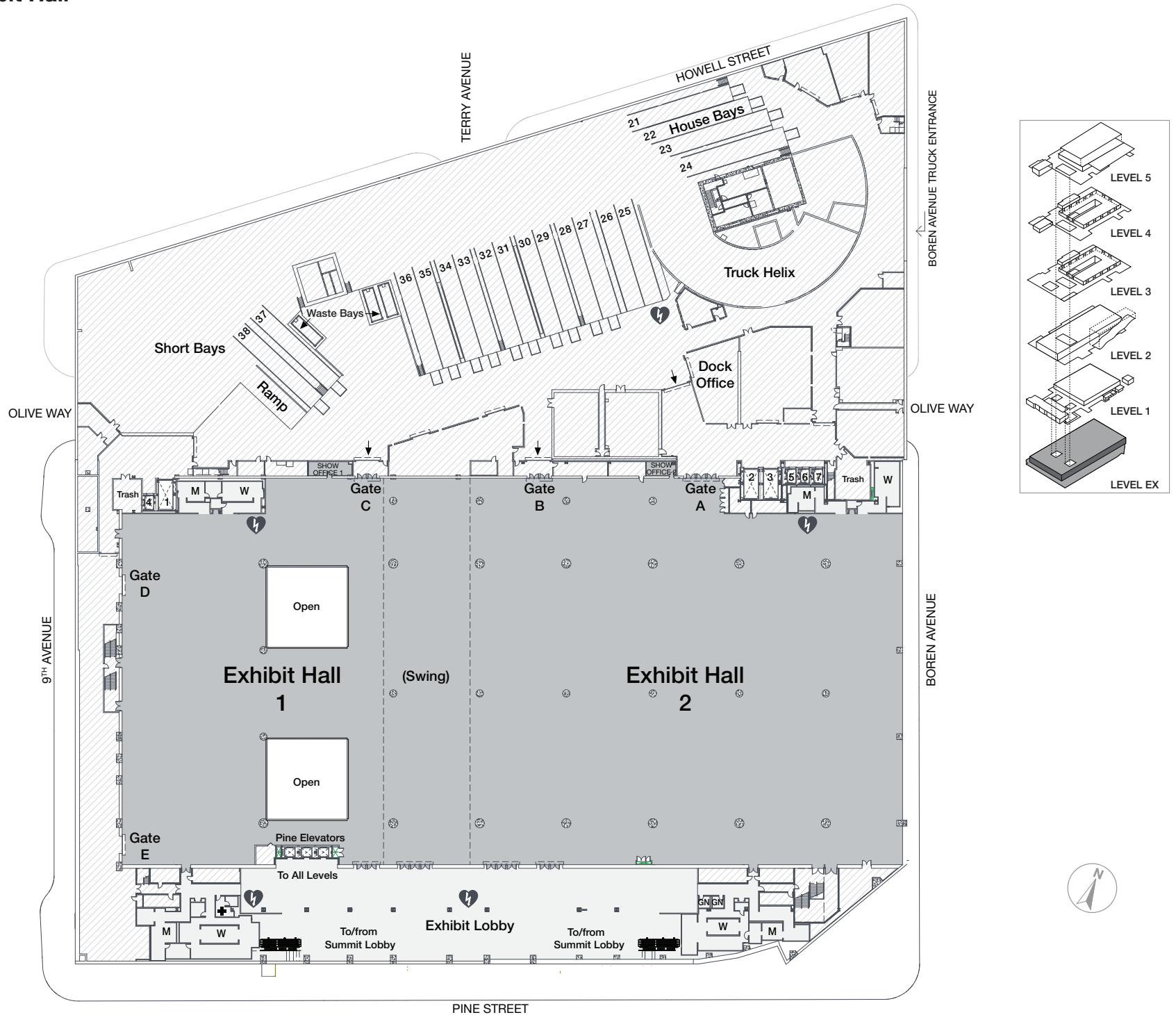
- 58,000 square-foot column-free ballroom with 55-foot ceiling
- 120-foot by 61-foot window with view of Seattle's vibrant Capitol Hill neighborhood and the Cascade Range
- VIP suite, green rooms, and an additional 6,500 square feet of unique meeting space
- 30,000 square feet of carpeted pre-function space

Level 1 – Entrance

LEVEL 1	SQUARE FEET	DIMENSIONS	HEIGHT
Market	8,400	(varies)	24
Summit Lobby	10,400	(varies)	24



Level EX - Exhibit Hall

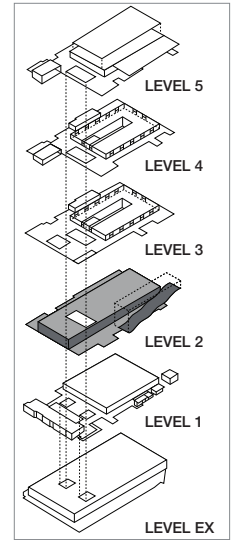
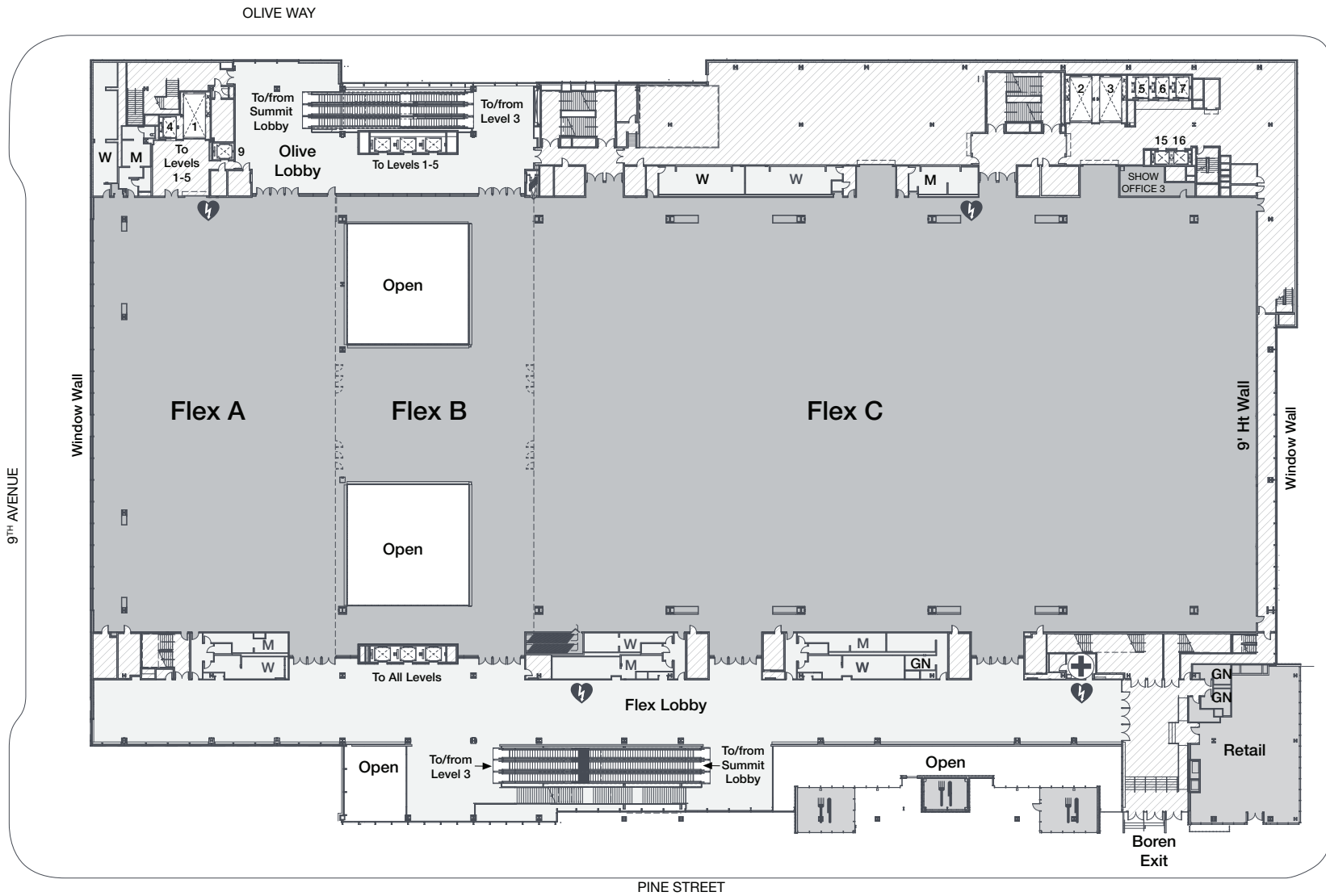


Level EX - Exhibit Hall

EXHIBIT HALLS	SQUARE FEET	DIMENSIONS	HEIGHT	BOOTHS 10' X 10'	RECOMMENDED FRONT
Exhibit Hall	138,700	540 x 270	30	620	East
Exhibit Hall 1	45,200	180 x 270	30	200	West
Exhibit Hall 1 + Swing*	61,200	240 x 270	30	280	
Exhibit Hall 2	77,300	300 x 270	30	350	East
Exhibit Hall 2 + Swing*	93,400	360 x 270	30	420	
Exhibit Lobby	10,500	(varies)	30	60	

*Swing may not be used as a standalone space

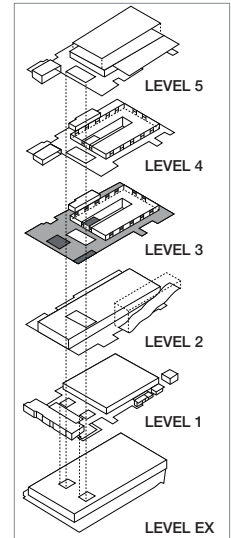
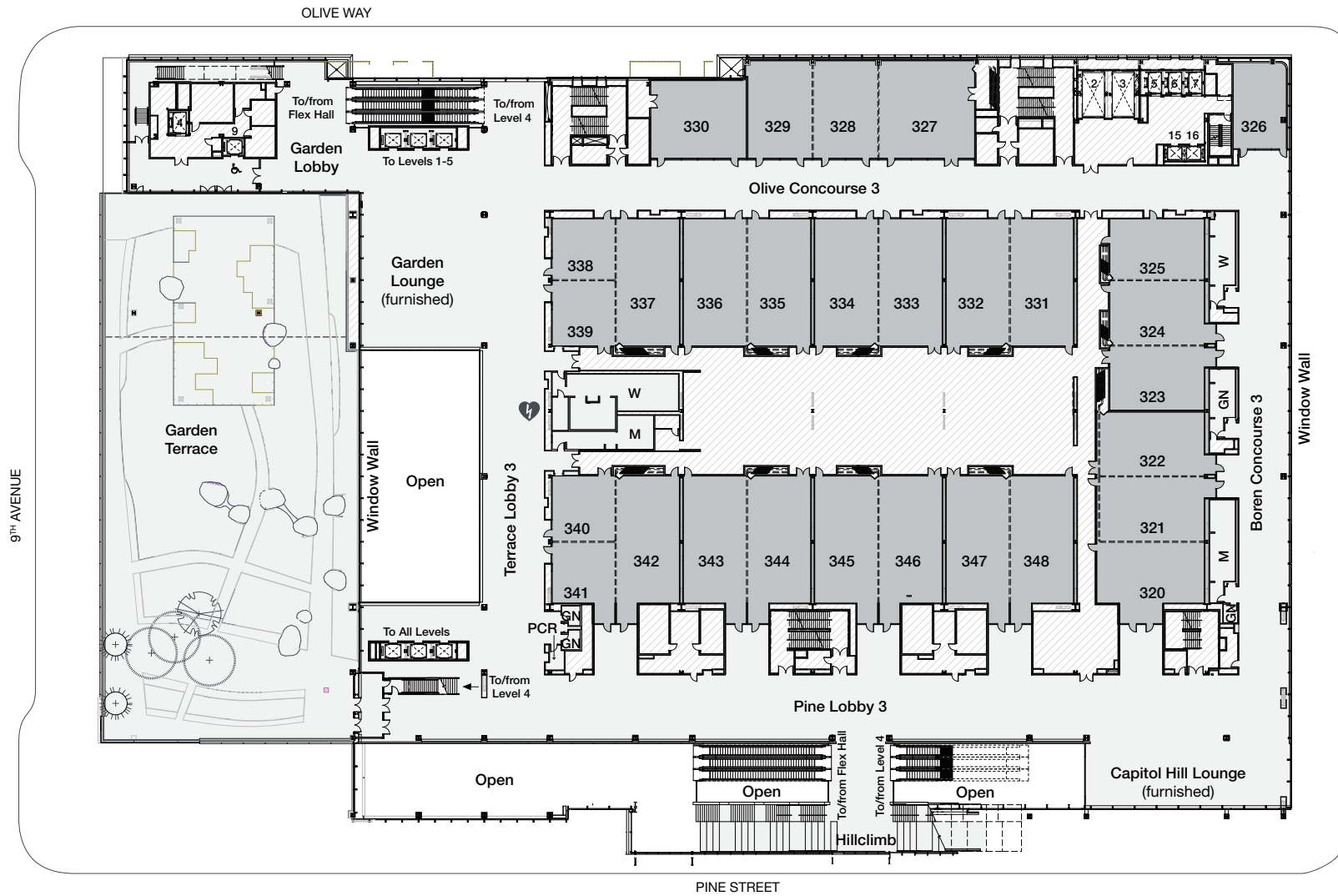
Level 2 – Flex Hall



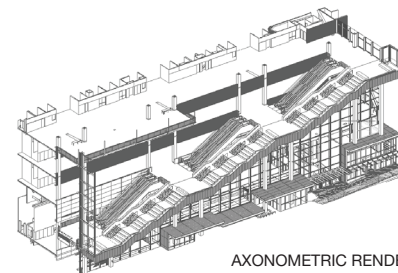
Level 2 – Flex Hall

FLEX HALLS	SQUARE FEET	DIMENSIONS	HEIGHT	THEATER	CLASSROOM	BANQUET	BOOTHS 10' X 10'	RECOMMENDED FRONT
Flex	99,250	200 x 530	30	8,000	5,535	5,860	500	East
Flex A	22,100	200 x 110	30	2,000	1,200	1,300	100	West
Flex B	10,800	200 x 85	30	-	-	420	40	n/a
Flex C	66,110	200 x 330	30	4,000	3,600	3,800	300	East
Flex AB	33,600	200 x 200	30	-	-	1,720	140	
Flex BC	77,100	420 x 200	30	-	-	4,000	340	
Flex Lobby	13,100	(varies)	30	-	-	-	-	
Olive Lobby	2,100	(varies)	18	-	-	-	-	

Level 3 – Meeting Rooms & Garden Terrace



LEVEL 3	SQUARE FEET	CAPACITY	HEIGHT
Garden Terrace	14,000	1,000	Open



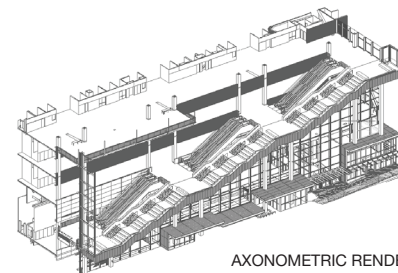
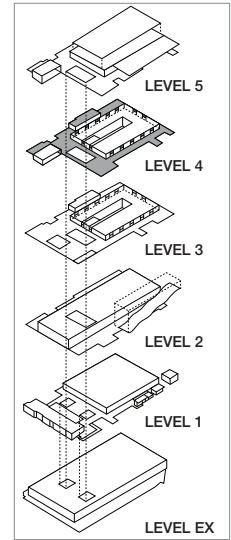
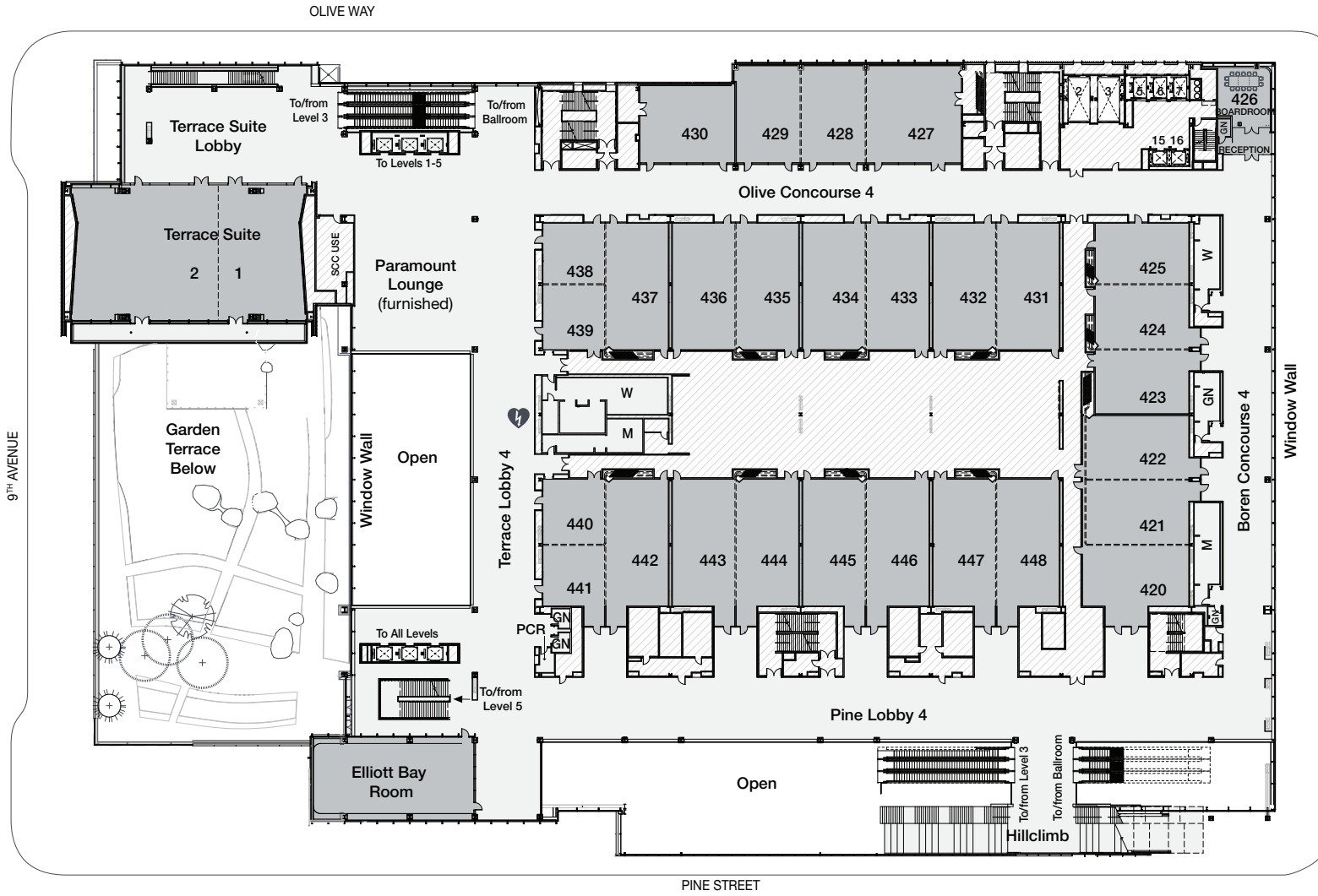
AXONOMETRIC RENDERING OF HILLCLIMB



Level 3 – Meeting Rooms & Garden Terrace

LEVEL 3 MEETING ROOMS	SQUARE FEET	DIMENSIONS	HEIGHT	THEATER	CLASSROOM	BANQUET	RECOMMENDED FRONT
Room 320	1,370	28 x 49	17	120	70	70	West
Room 321	1,450	30 x 49	17	130	70	80	West
Room 322	1,430	29 x 49	17	130	70	80	West
Room 320–322	4,300	88 x 49	17	390	230	240	North
Room 323	1,270	29 x 43	17	110	60	70	West
Room 324	1,270	30 x 43	17	110	60	70	West
Room 325	1,200	28 x 43	17	100	60	60	West
Room 323–325	3,780	88 x 43	17	340	200	210	South
Room 326	960	40 x 24	17	80	50	50	North
Room 327	1,950	45 x 44	17	170	100	110	North
Room 328	1,310	45 x 29	17	110	70	70	North
Room 329	1,310	45 x 29	17	110	70	70	North
Room 327–329	4,620	45 x 104	17	420	240	260	East
Room 330	1,550	36 x 44	17	140	80	80	North
Room 331	1,680	58 x 29	17	150	90	90	South
Room 332	1,680	58 x 29	17	150	90	90	South
Room 331–332	3,380	58 x 58	17	300	180	190	South
Room 333	1,680	58 x 29	17	150	90	90	South
Room 334	1,680	58 x 29	17	150	90	90	South
Room 333–334	3,390	58 x 58	17	300	180	190	South
Room 335	1,680	58 x 29	17	150	90	90	South
Room 336	1,680	58 x 29	17	150	90	90	South
Room 335–336	3,390	58 x 58	17	300	180	190	South
Room 337	1,680	58 x 29	17	150	90	90	South
Room 338	800	28 x 29	17	70	40	40	East
Room 339	860	30 x 29	17	70	40	40	East
Room 337–339	3,390	58 x 58	17	300	180	190	East
Room 340	860	30 x 29	17	70	40	40	East
Room 341	800	28 x 29	17	70	40	40	East
Room 342	1,680	58 x 29	17	150	90	90	North
Room 340–342	3,390	58 x 58	17	300	180	190	East
Room 343	1,680	58 x 29	17	150	90	90	North
Room 344	1,680	58 x 29	17	150	90	90	North
Room 343–344	3,390	58 x 58	17	300	180	190	North
Room 345	1,680	58 x 29	17	150	90	90	North
Room 346	1,680	58 x 29	17	150	90	90	North
Room 345–346	3,390	58 x 58	17	300	180	190	North
Room 347	1,680	58 x 29	17	150	90	90	North
Room 348	1,680	58 x 29	17	150	90	90	North
Room 347–348	3,390	58 x 58	17	300	180	190	North
Level 3 Meeting Room Lobbies	35,900	(varies)	18	-	-	-	

Level 4 – Meeting Rooms



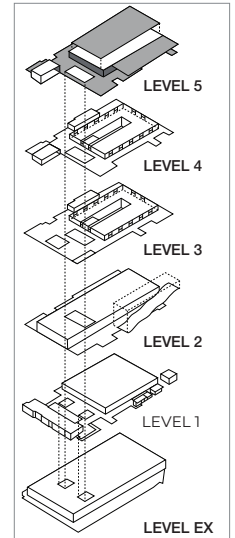
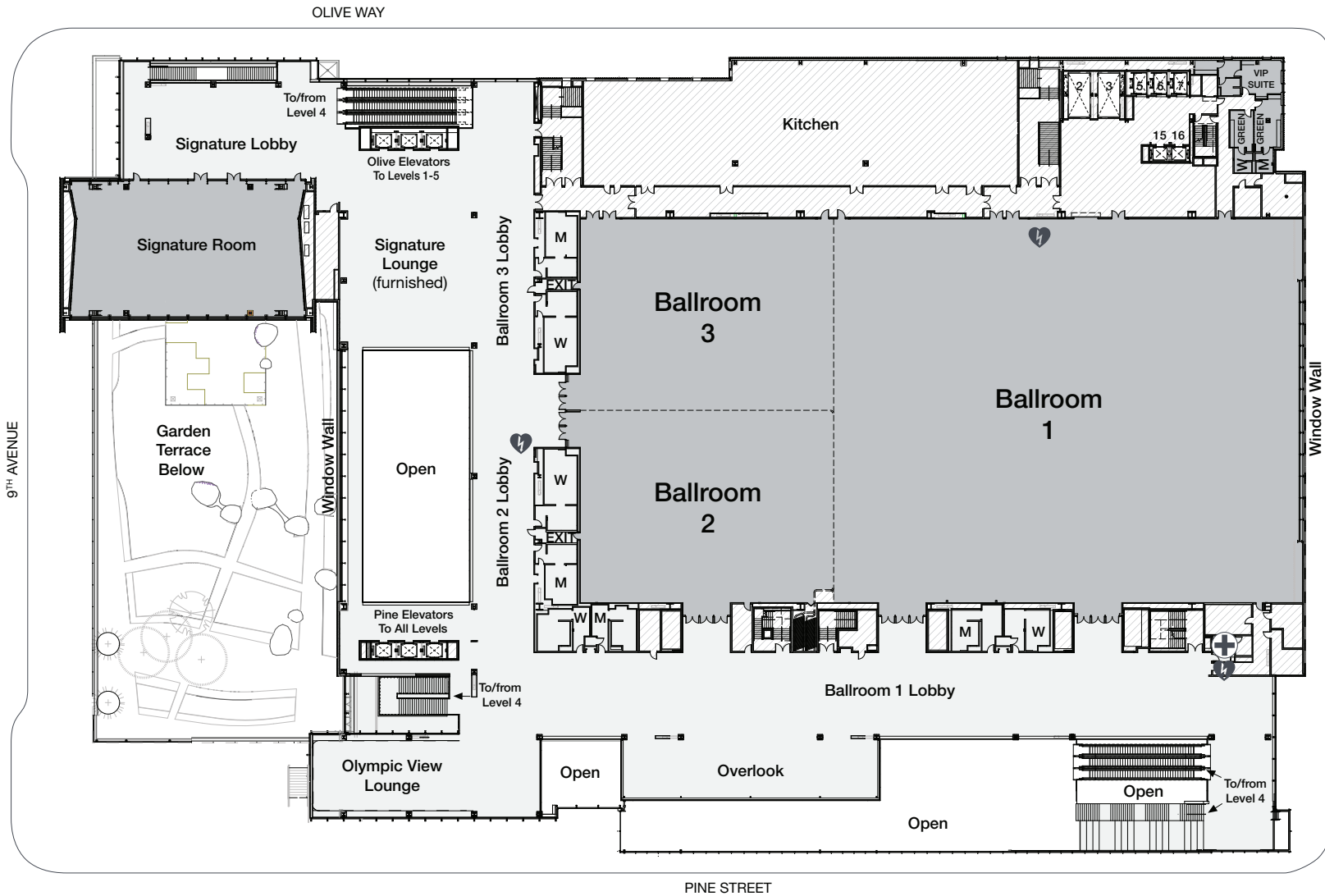
AXONOMETRIC RENDERING OF HILLCLIMB



Level 4 – Meeting Rooms

LEVEL 4 MEETING ROOMS	SQUARE FEET	DIMENSIONS	HEIGHT	THEATER	CLASSROOM	BANQUET	RECOMMENDED FRONT
Room 420	1,370	28 x 49	17	120	70	70	West
Room 421	1,450	30 x 49	17	130	70	80	West
Room 422	1,430	29 x 49	17	130	70	80	West
Room 420-422	4,300	88 x 49	17	390	230	240	North
Room 423	1,270	29 x 43	17	110	60	70	West
Room 424	1,270	30 x 43	17	110	60	70	West
Room 425	1,200	28 x 43	17	100	60	60	West
Room 423-425	3,780	88 x 43	17	340	200	210	South
Room 426 (Board Room)	540	22 x 24	17	-	-	-	
Room 427	1,960	45 x 44	17	170	100	110	North
Room 428	1,310	45 x 29	17	110	70	70	North
Room 429	1,310	45 x 29	17	110	70	70	North
Room 427-429	4,630	45 x 104	17	420	250	260	East
Room 430	1,550	36 x 44	17	140	80	80	North
Room 431	1,680	58 x 29	17	150	90	90	South
Room 432	1,680	58 x 29	17	150	90	90	South
Room 431-432	3,380	58 x 58	17	300	180	190	South
Room 433	1,680	58 x 29	17	150	90	90	South
Room 434	1,680	58 x 29	17	150	90	90	South
Room 433-434	3,390	58 x 58	17	300	180	190	South
Room 435	1,680	58 x 29	17	150	90	90	South
Room 436	1,680	58 x 29	17	150	90	90	South
Room 435-436	3,390	58 x 58	17	300	180	190	South
Room 437	1,680	58 x 29	17	150	90	90	South
Room 438	790	28 x 28	17	70	40	40	East
Room 439	850	30 x 28	17	70	40	40	East
Room 437-439	3,370	58 x 58	17	300	180	190	East
Room 440	850	30 x 28	17	70	40	40	East
Room 441	790	28 x 28	17	70	40	40	East
Room 442	1,680	58 x 29	17	150	90	90	North
Room 440-442	3,370	58 x 58	17	300	180	190	East
Room 443	1,680	58 x 29	17	150	90	90	North
Room 444	1,680	58 x 29	17	150	90	90	North
Room 443-444	3,390	58 x 58	17	300	180	190	North
Room 445	1,680	58 x 29	17	150	90	90	North
Room 446	1,680	58 x 29	17	150	90	90	North
Room 445-446	3,390	58 x 58	17	300	180	190	North
Room 447	1,680	58 x 29	17	150	90	90	North
Room 448	1,680	58 x 29	17	150	90	90	North
Room 447-448	3,390	58 x 58	17	300	180	190	North
Elliott Bay Room	2,430	33 x 74	21	220	130	130	West
Terrace Suite	6,500	62 x 105	23	590	350	370	West
Level 4 Meeting Room Lobbies	38,700	(varies)	18	-	-	-	

Level 5 – Ballroom



Level 5 – Ballroom

BALLROOMS	SQUARE FEET	DIMENSIONS	HEIGHT	THEATER	CLASSROOM	BANQUET	BOOTHS 10' X 10'	RECOMMENDED FRONT
Ballroom	58,000	176 x 329	30–55	5,000	3,540	3,780	300	East
Ballroom 1	37,500	176 x 212	40–55	3,900	2,200	2,380	196	East
Ballroom 2	10,200	87 x 115	30	900	560	630	45	East
Ballroom 3	10,200	88 x 115	30	900	560	630	45	North
Ballroom 2–3	20,450	176 x 115	30	1,900	1,200	1,200	99	North
Ballroom Lobby	30,000	(varies)	18	-	-	-	-	

MEETING ROOM	SQUARE FEET	DIMENSIONS	HEIGHT	THEATER	CLASSROOM	BANQUET	BOOTHS 10' X 10'	RECOMMENDED FRON
Signature Room	6,500	62 x 104	32	605	365	380	-	West

Room Set Capacity

General Room Set Information






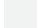
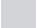
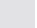

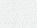
- Sample maximum set room diagrams are available upon request
- Maximum listed capacities will be reduced by optional peripheral equipment such as stages, audio visual equipment, catering services, etc.
- All exhibit, general session and registration layouts are subject to fire code review
- Stage risers are not generally set in non-combined meeting rooms

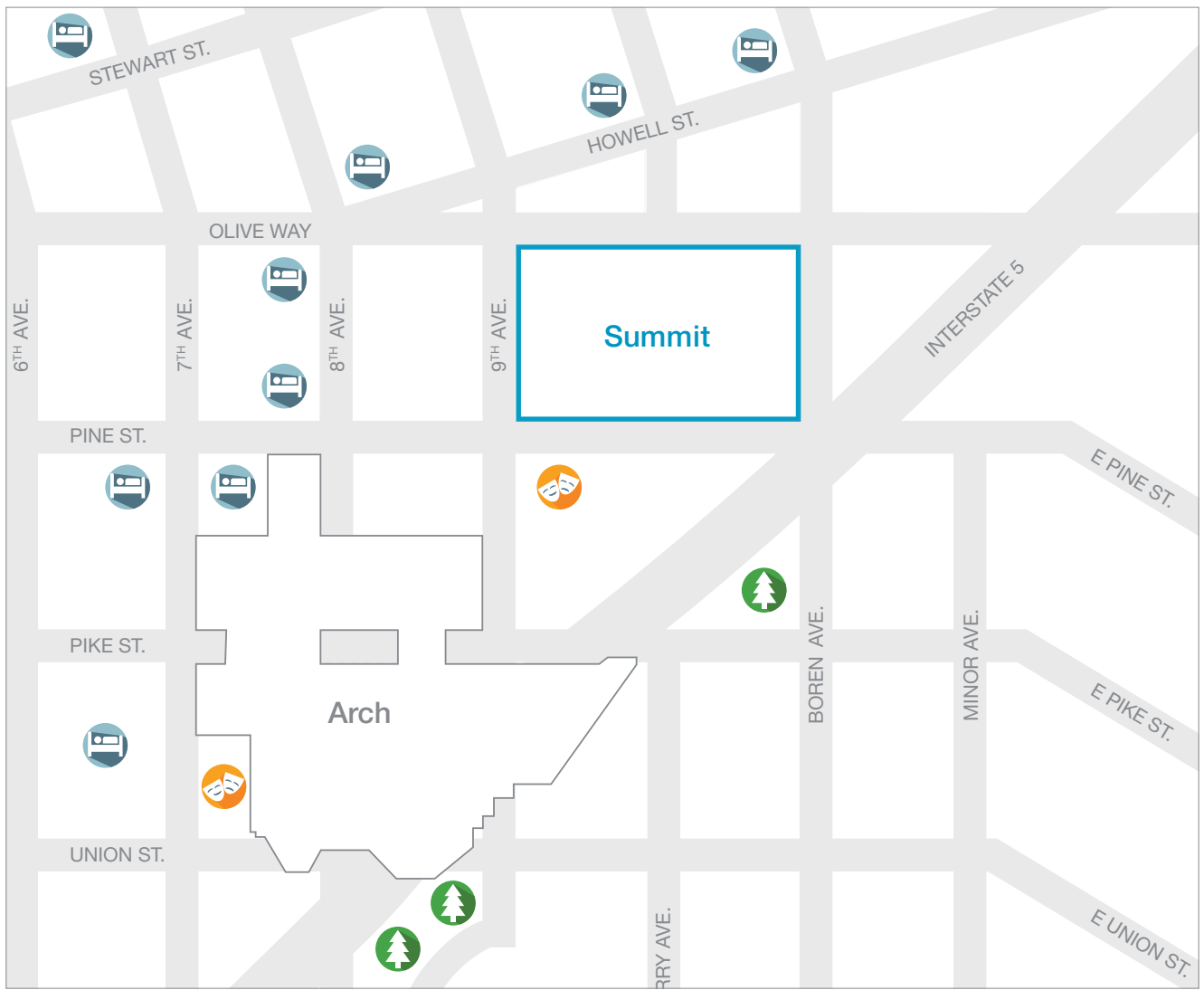
Complimentary Amenities

- Notepads and pens provided within meeting room
- Room conversions / refreshes with sufficient notice:
 - Daytime meeting set to or from a food and beverage set
 - Overnight to or from any set or room combination
 - One daytime room refresh and nightly cleaning to GBAC STAR™ standards

Chair Dimensions: <ul style="list-style-type: none"> • 20" wide x 23" deep 	Riser Specifications: <ul style="list-style-type: none"> • Safety rails are required on all stage risers • 6' x 8' sections • 16", 24", 32", 40" heights • Installation fee will apply for sets exceeding 12 units • Subject to available inventory 	Banquet: <ul style="list-style-type: none"> • 72" rounds • 10 chairs per table • 11' centers – spacing between tables • Straight row layout as standard, staggered sets not preferred
Theater: <ul style="list-style-type: none"> • Maximum of 15 chairs per row (before aisle) • Maximum 15 rows (before aisle) • 20" space between rows (leg to leg) 		Front of Room Allowance in Capacity Counts: <ul style="list-style-type: none"> • Front wall to first row for Theater and Classroom sets <ul style="list-style-type: none"> ◦ Single meeting rooms - 10' ◦ Ballrooms - 20' ◦ Combined meeting rooms - 13' ◦ Flex Halls - 40' • No front of room allowance in Banquet or Conference sets
Conference: <ul style="list-style-type: none"> • Conference maximum capacity may be set as board or hollow square, depending on room size • 8'x 30" tables as standard • 1 chair per 2' of table 		

LEGEND

 AED Device	 Food/Beverage	 First Aid	GN Gender Neutral Restrooms	PCR Personal Consideration Room	 Accessible Entrance Lift
 Event Space	 Attendee Access	 Retail	 F & B Event Space	 Back of House	 Foyer



LEGEND: HOTEL  PARK  THEATRE 